

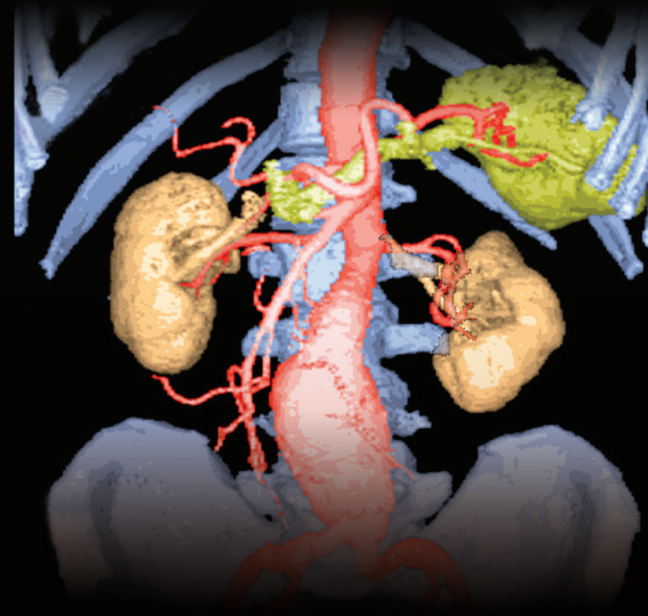
## Department of Diagnostic & Interventional Radiology

### Hong Kong Sanatorium & Hospital

1/F, Li Shu Pui Block  
2 Village Road, Happy Valley, Hong Kong  
Tel: (852) 2835 8900  
Fax: (852) 2892 7530  
radiology@hksh-hospital.com  
www.hksh-hospital.com

### HKSH Eastern Medical Centre

HKSH Cancer Centre (Island East)  
7/F, Li Shu Fong Building  
5 A Kung Ngam Village Road  
Shau Kei Wan, Hong Kong Tel:  
(852) 2917 1270  
Fax: (852) 2892 7407  
radiology@hksh-emc.com  
www.hksh-emc.com



# Computed Tomography

For enquiries and appointments,  
please contact us

DR 3031/H/E-02-042019

## What is Computed Tomography (CT)?

Computed Tomography (CT) is an advanced and unique imaging method of the entire body using X-ray and special computers. It takes cross-sectional images of the body with X-ray and reconstructs the information obtained from scanning with special computers to show the part of the body being studied in remarkable detail. Over a hundred different soft tissue densities can be seen.

## Who Needs a CT Scan?

Your doctor generally decides whether a CT scan is the best investigation for your condition. Common indications include patients with cancer, infection or inflammation; patients who have suffered a stroke or sustained trauma; patients with severe abdominal pain; patients with persistent fever; patients who wish to take a health check (e.g. heavy smokers). These are just a few examples of the versatilities of CT applications.

## Services

To ensure the highest possible degree of diagnostic accuracy, we introduce the most advanced equipment as soon as it is available. Besides conventional imaging, exquisite CT angiography, 2D & 3D rendering reconstruction and virtual endoscopy can be done.

## Preparations

### What should I do prior to the examination?

- You will usually be required to fast for 3 hours prior to the examination
- Please come on time for the examination

## Precautions

Please inform your doctor of any history of known drug allergy (especially contrast medium), food allergy, history of asthma, urticaria, eczema or allergic rhinitis.

## Procedures

### How long will it take?

The examination only takes 10 to 15 minutes because most studies are performed using a single breath-hold. However, in certain examinations you may need to drink oral contrast 1 to 2 hours beforehand. Please allow sufficient time for this in these circumstances.

### What should I do during the examination?

To ensure that the structures being studied can be clearly shown, it is very important that you lie still and hold your breath as instructed during the examination.

### What happens during the examination?

- The CT scanner consists of a table, a very sophisticated X-ray tube and a special array of detectors. During examination, you will lie on the CT table, which will carry you slowly through the gantry of the scanner
- A collimated X-ray beam will pass through your body. In this way, a number of cross-sectional images of the body are taken
- Intravenous or oral contrasts are usually given prior to the examination to enable the radiologist to better see the structures being studied and better diagnose your condition

### What should I do after the examination?

You can eat or drink as usual after the examination. The result of your scan will be communicated to your referring doctor.

## 診斷及介入放射部

### 養和醫院

香港跑馬地山村道2號李樹培院1樓

電話：(852) 2835 8900

傳真：(852) 2892 7530

radiology@hksh-hospital.com

www.hksh-hospital.com

### 養和東區醫療中心

養和癌症中心(港島東)

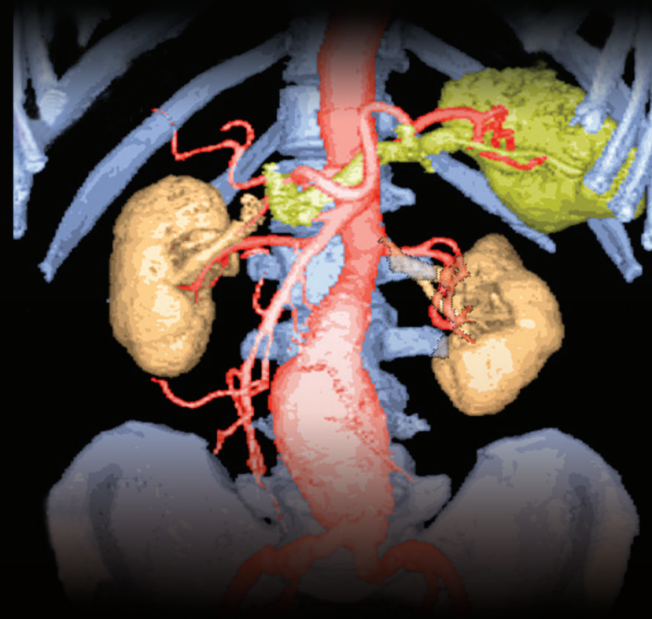
香港筲箕灣阿公岩村道5號李樹芳樓7樓

電話：(852) 2917 1270

傳真：(852) 2892 7407

radiology@hksh-emc.com

www.hksh-emc.com



## 電腦掃描

查詢或預約，歡迎聯絡我們

DR.3031.H/C-02-042019

## 甚麼是電腦掃描(CT)?

電腦掃描(CT)是一種先進之X光造影技術，利用X光及精密的電腦檢查身體不同部位之病變。X光穿透人體後，得出的橫切面影像經電腦分析，將需要檢查的器官或組織清楚地呈現眼前。電腦掃描可顯示超過一百種人體軟組織密度，對診斷的幫助大大提高。

## 哪些人士需要檢查?

由你的醫生決定。電腦掃描用途相當廣泛，常用作診斷癌症、感染、發炎、中風、外傷、嚴重腹痛及持續發燒等，亦適合大量吸煙的人士作健康檢查之用。

## 專業服務

本部引入最先進的儀器，務求使病人得到最準確的診斷。除進行傳統造影外，更可作血管攝影、平面及立體影像重組，以及仿真內視鏡等多項功能分析，表現相當出色。

## 檢查前有甚麼須要準備?

- 病人一般須在檢查前三小時開始禁食
- 請準時到達

## 注意事項

如患有哮喘或曾對任何藥物(尤其是造影劑)、食物、花粉等有過敏反應，請在預約檢查時告知醫生，以作安排。

## 檢查過程

### 檢查需時多久?

檢查只需十至十五分鐘，通常一次閉氣就可完成。然而，進行某些檢查的病人可能須於檢查前一至兩小時飲服造影劑。請預留充足時間。

### 檢查時須要做甚麼?

為確保影像清晰，檢查時請臥於床上保持體位不變，及按指示閉氣。

### 檢查過程是怎樣的?

- 電腦掃描機主要有三個部份:掃描床、精密的X光管及一組特別的感應器。放射技師會讓你躺在掃描床上，然後慢慢將之推進儀器中心的空間
- X光管會瞄準需要檢查的部位。X光穿透人體，就可得出不同部位之橫切面影像
- 檢查前通常須要注射或飲服造影劑，藉以加強對病變位置之敏感度，作出更準確的診斷

### 檢查後須要做甚麼?

檢查後可如常飲食。我們會把檢查報告送交你的主診醫生。